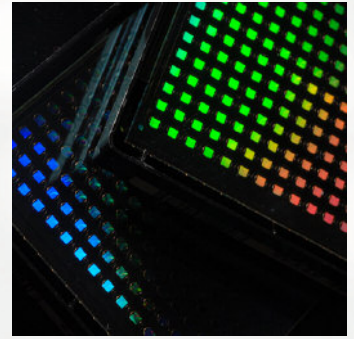


Fast. Cost Effective. Accessible.

Corning® Epic® Discovery Services

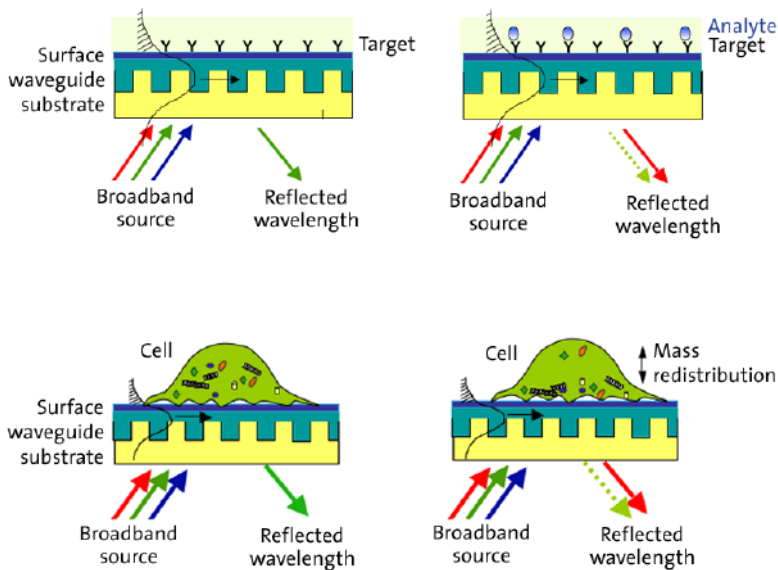


Do You Have:

- ▶ Too many projects and not enough resources?
- ▶ No access to label-free assay formats?
- ▶ A requirement for fast turnaround on data?
- ▶ Issues with your current assays?
- ▶ An outsourcing budget?

...then choose Corning Epic Services

- ▶ Access to label-free equipment
- ▶ Utilize the label-free experience of our Applications Group
- ▶ Full data interpretation service
- ▶ Confidential work performed under NDA



Corning Epic Label-free Technology – Principle of Operation

Corning offers:

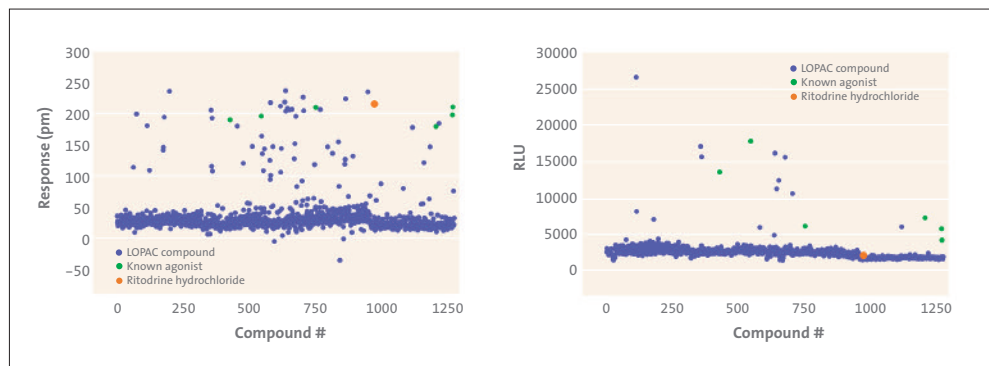
- ▶ Proof of Concept
- ▶ Full Assay Development and *screening ready* protocols available for existing customers
- ▶ Screening and Hit Confirmation – *any* number of compounds
- ▶ Pathway deconvolution and toxin studies as applicable
- ▶ Corning Epic Pharmacology profiling services

CORNING

Epic
technology

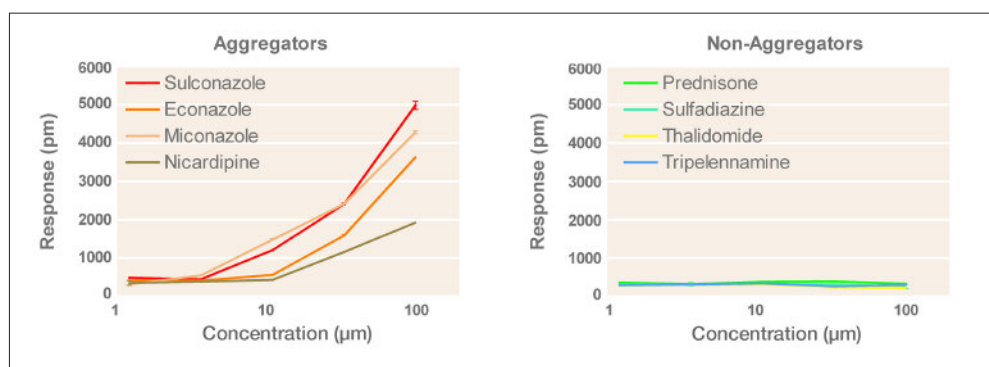
Available assays include but are not limited to:

Cell-based Screening Assays



Response of LOPAC compounds on the Corning® Epic® System (left) and the cAMP platform (right). Orange data point highlights ritodrine hydrochloride, a specific β_2 AR agonist that is not detected as a hit on the cAMP platform.

Compound/protein Aggregation



Four known aggregators and four known non-aggregators were tested. Plots were generated using response values at 60 minutes after compound addition and subtracting out the DMSO background response.

Other Cell-based Assays:

- ▶ GPCRs
- ▶ RTKs
- ▶ Ion channels – ligand-gated and voltage-gated
- ▶ Toll-like Receptors (TLRs)
- ▶ Transporters
- ▶ Pathway analysis
- ▶ Safety assessment – cardiotoxicity, other toxin studies
- ▶ Chemotaxis
- ▶ Primary and endogenous cells

Other Biochemistry-based Assays:

- ▶ Fragment-based drug discovery screening
- ▶ Protein – small molecule
- ▶ Enzyme targets – kinases, proteases
- ▶ Epigenetics assays
- ▶ Protein – protein/Peptide/Antibody
- ▶ Antibody/hybridoma screening and epitope mapping

Visit our video library at www.corning.com/epic

Contact Corning now!

For a confidential consultation on project costs, timing and targets, please contact epic@corning.com

The Corning Family of Brands

CORNING costar cellgro® PYREX® AXYGEN® GOSSELIN™

For a listing of trademarks, visit us at www.corning.com/lifesciences/trademarks.
Corning Incorporated, One Riverfront Plaza, Corning, NY 14831-0001

Corning Incorporated Life Sciences

Tower 2, 4th Floor
900 Chelmsford St.
Lowell, MA 01851
t 800.492.1110
t 978.442.2200
f 978.442.2476

www.corning.com/lifesciences